

Resources

- Autism Society of America (ASA):
www.autism-society.org
 - Autism Speaks:
www.autismspeaks.org
- First Signs: www.firstsigns.org
 - Families for Early Autism Treatment (FEAT): www.feat.org
- National Autistic Society (NAS):
www.nas.org.uk
- Autism Research Institute (ARI):
www.autismresearchinstitute.com
 - Tony Attwood:
www.tonyattwood.com.au
 - Mind Institute:
www.ucdmc.ucdavis.edu/mindinstitute
 - Mind Matters:
www.mindmattersclinic.org

2012 Donations

- Calaveras High Track & Field
- Speech Therapy & Associates
- Boston Alley Fitness
- Pioneer Montessori
- Mind Matters
- The Resource Connection

TRI-COUNTY AUTISM GROUP

**P.O. Box 597
Valley Springs, CA 95252
Phone: 209.772.8162
Phone: 209.257.5444
Fax: 209.772.2105
Info@tricityautismgroup.com**



TRI-COUNTY AUTISM GROUP

Non-Profit Organization

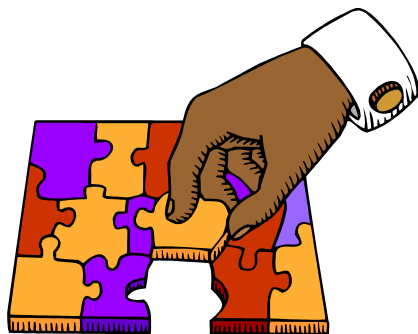
Amador/Calaveras/Tuolumne County



**Helping Families with
Autism Since 2007**

**Phone: 209.772.8162
Phone 209.257.5444**

Main inside Heading



What is Autism?

Autism spectrum disorder (ASD) and autism are both general terms for a group of complex disorders of brain development. These disorders are characterized, in varying degrees, by difficulties in social interaction, verbal and nonverbal communication and repetitive behaviors. They include autistic disorder, Rett syndrome, childhood disintegrative disorder, pervasive developmental disorder-not otherwise specified (PDD-NOS) and Asperger syndrome.

How common is it?

Autism statistics from the U.S. Centers for Disease Control and Prevention (CDC) identify around 1 in 88 American children as on the autism spectrum—a ten-fold increase in prevalence in 40 years. Careful research shows that this increase is only partly explained by improved diagnosis and awareness. Studies also show that autism is three to four times more common among boys than girls. An estimated 1 out of 54 boys and 1 in 252 girls are diagnosed with autism in the United States.

What Causes Autism?

They know that there is no one cause of autism just as there is no one type of autism. Over the last

five years, scientists have identified a number of rare gene changes, or mutations, associated with autism. A small number of these are sufficient to cause autism by them selves. Most cases of autism, however, appear to be caused by a combination of autism risk genes and environmental factors influencing early brain development.

Up Coming Events for 2012!

June 28th-July 4th Phantom Fireworks booth @ Umpqua Bank in Valley Springs

October 7th The 5th Annual TAG Ride for Autism. Starting @ El Torero in Burson